

COOLTRADER PRO

Training



3-step trading

- 1 Download software
- 2 Select a strategy
- 3 Walk away



Legal Disclaimer

- **Disclaimer:** The Example Strategies are for demonstration purposes only. CoolTrader pro and CoolTrade do not make buy, sell, or hold recommendations. Unique experiences and past performances do not guarantee future results. CoolTrader pro and CoolTrade are not broker dealers and are not selling securities or providing investment advice.

COOLTRADER PRO



- Welcome to the CoolTrade Robotic Trader.
- Thank you for joining our mission to restore confidence to the middle class investor by leveraging technology and innovation.
- This presentation will walk you through the system and all of its features. Please carefully read through this presentation and you will be well on your way to trading like a Pro.

COOLTRADER PRO

When you Download the software you will see 5 new Icons on your desktop. This first section will describe each icon and what you need to know.



Launch Read first will provide you with important installation instructions for Windows and Vista operating systems.

1. Click "Start" -> "Control Panel".
2. Type UAC. Then click the "Turn User Account Control (UAC) on or off or adjust default settings.
3. That will pop up the "turn on/off UAC.
4. If UAC is checked, then uncheck it, and click "OK".
5. **If running Windows 7 Slide bar to Never Notify.**
6. Reboot your computer.
6. Then Click the "Launch Regocxfiles.bat" desktop icon.
7. Now you can run the CoolTrade applications.



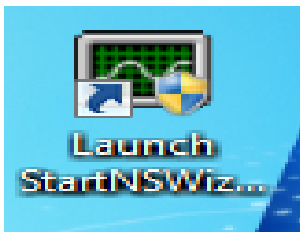
Launch regocxfiles.bat will register your Active X Controls and allow the Robotic Trader to run on your Operating System. This is required on all installations.

COOLTRADER PRO

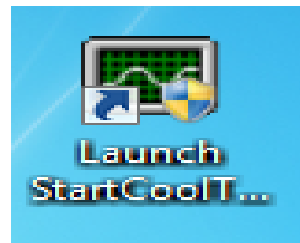
When you Download the software you will see 5 new Icons on your desktop. This first section will describe each icon and what you need to know.



This icon is only needed for FOREX/Currency Traders if you are not planning to trade FOREX you can delete this icon.

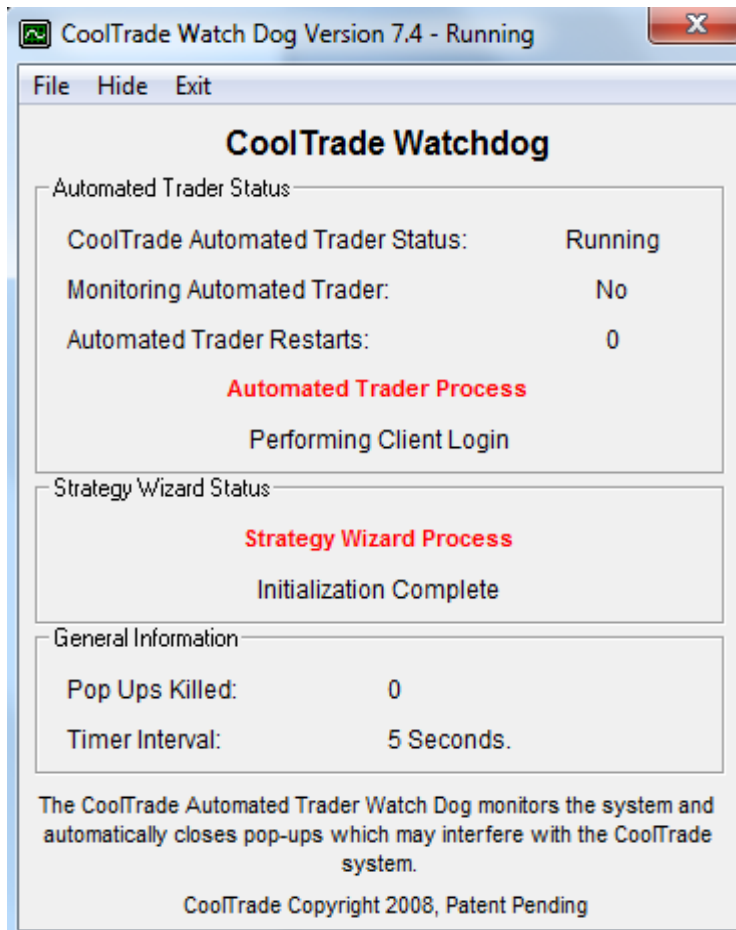


This icon will allow you to access the Strategy Wizard and select, build or modify your trader. You should click this icon first. Select your strategy, set your start and stop times, set your number of shares per trade and select number of stocks you want to trade.



After you have completed the previous steps you can now launch your CoolTrade Robotic Trader. The watch dog and the broker page will appear. You can choose to simulate with or without a broker. The Watch Dog will appear and provide you with status.

COOLTRADER PRO




This feature is called the Watch Dog. The Watch Dog will open when CoolTrade is launched and provide you with the status of the Automated Trader and the Strategy Wizard. The Watch Dog monitors the system and closes pop-ups that may interfere with the Cooltrade System. If the program shuts down it will tell you how many restart attempts have been performed. If you would like to hide the Watch Dog Click Hide or Exit at the top of the screen.

The first page you will see when you launch the CoolTrade Robotic Trader is the Broker/Partner page. If you have an account setup with one of our Broker/Partners simply click Simulator next to your broker and login with your CoolTrade User name and password. You will then be asked to enter your broker user name and password. If you do not have a broker you can simulate without a broker with the CoolTrade Data Feed.

CoolTrade Login 7.4.112

File Video Help


COOLTRADE ROBOTIC TRADER



U.S. Exchanges


LIVE TRADING: AMEX, NYSE, NASDAQ (U.S.)

SIMULATOR: AMEX, NYSE, NASDAQ (U.S.)




LIVE TRADING: AMEX, NYSE, NASDAQ (U.S.)

SIMULATOR: AMEX, NYSE, NASDAQ (U.S.)




LIVE TRADING: AMEX, NYSE, NASDAQ (U.S.)

SIMULATOR: AMEX, NYSE, NASDAQ (U.S.)




LIVE TRADING: AMEX, NYSE, NASDAQ (U.S.)

SIMULATOR: AMEX, NYSE, NASDAQ (U.S.)



LIVE TRADING: AMEX, NYSE, NASDAQ (U.S.)


SIMULATOR: AMEX, NYSE, NASDAQ (U.S.)



Forex Only

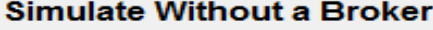
LIVE TRADING: FOREX

SIMULATOR



LIVE TRADING: AMEX, NYSE, NASDAQ (U.S.)

SIMULATOR: AMEX, NYSE, NASDAQ (U.S.)



SIMULATOR: AMEX, NYSE, NASDAQ (U.S.)

Additional Login Options

Change Default Strategies

Use IQFeed (Requires DTN IQFeed Subscription)

International Exchanges

LIVE	SIMULATE
<input checked="" type="radio"/> Australia ASX (Live)	<input type="radio"/> ASX (Simulate)
<input checked="" type="radio"/> Honk Kong HKX (Live)	<input type="radio"/> HKX (Simulate)
<input checked="" type="radio"/> India NSE (Live)	<input type="radio"/> NSE (Simulate)
<input checked="" type="radio"/> Singapore SGX (Live)	<input type="radio"/> SGX (Simulate)
<input checked="" type="radio"/> Toronto TSE (Live)	<input type="radio"/> TSE (Simulate)

MB TRADING

LIVE TRADING: AMEX, NYSE, NASDAQ (U.S.)

SIMULATOR: AMEX, NYSE, NASDAQ (U.S.)

Institutional and Proprietary House Brokers

Prop Brokers (Live)

PB (Simulate)

Select Broker / Destination

- ChoiceTrade
- LightSpeed

Email Name

Password

Trading in Stealth Mode > > > (click to halt trading)

Account Values

Connectivity

Show Chart

Show Trades

System Activity

Long Short

Dow: -64.20

Nasdaq: -6.37

S&P 100: -4.80

E-Mini: -8.75

Toggle Screen

DayTrades Left: 999

 Utilize 2-1 Margin Utilize 4-1 Margin

Session P/L: 1.37%

Edit

 Reserve enough funds to purchase Max shares set in Strategy.

Regardless of account balance, CoolTrade should never utilize more than \$ 2,000,000

Current Account Value

\$ 30,380

Funds Allocated

\$ 53,900

Funds Available

\$ 2,303

Positions: Long(0), Short(3)

Close All Long

Close All Short

Symbol	Side	Position	Avg Cost		Price	Position	Position	Net	Today's	Bid Price	Ask Price	Volume	Change
	Action	Quantity	Entry Price	Lmt Price	To Go	Change\$	Change%	P&L	P&L			Reached	Status
TOTAL								+ 430.00	+ 430.00				
GE	Short	-1000	20.4100					+ 220.00	+ 220.00	20.4400	20.4400	27,378,029	- 0.2400
	Buy	1000	20.6700	20.4200	0.0000	0.2600	1.2579%	+ 250.00	+ 250.00			Y	Closed
	Buy	1000	20.4100	20.1100	-0.3300	-0.0300	-0.1470%	- 30.00	- 30.00				Stealth
PFE	Short	-1000	24.0100					+ 80.00	+ 80.00	23.9300	23.9300	18,872,834	- 0.1200
	Buy	1000	24.0100	23.7100	-0.2200	0.0800	0.3332%	+ 80.00	+ 80.00				Stealth
BAC	Short	-1000	9.3200					+ 130.00	+ 130.00	9.1800	9.1900	124,328,414	- 0.1500
	Buy	1000	9.3200	9.0200	-0.1700	0.1400	1.5021%	+ 130.00	+ 130.00				Stealth

Long Watch List(13) : Dow 30 Long

Click for Short List

Symbol	Min Price	Max Price	Price To Go	Current Bid	Current Ask	Today's Volume	Today's Change	Rule Preventing Next Trade
AA	0.0000	999.0000	0.0000	8.2500	8.2600	7,719,198	-0.0600	CD Value (12,26,9,10,1) is Less Than Intraday MACD Signal Line (12,26,9,10,1)
CERN	0.0000	999.0000	0.0000	76.6500	76.6900	337,037	0.0700	Current Ask-Bid Range Too Wide: 0.0400
CSCO	0.0000	999.0000	0.0000	17.8300	17.8400	75,348,028	0.9800	CD Value (12,26,9,10,1) is Less Than Intraday MACD Signal Line (12,26,9,10,1)
DD	0.0000	999.0000	0.0000	42.7200	42.7300	3,727,971	-0.1900	CD Value (12,26,9,10,1) is Less Than Intraday MACD Signal Line (12,26,9,10,1)
DIS	0.0000	999.0000	0.0000	47.6900	47.7000	5,415,130	-0.2700	CD Value (12,26,9,10,1) is Less Than Intraday MACD Signal Line (12,26,9,10,1)
HPQ	0.0000	999.0000	0.0000	13.2100	13.2200	17,002,589	0.0800	CD Value (12,26,9,10,1) is Less Than Intraday MACD Signal Line (12,26,9,10,1)
INTC	0.0000	999.0000	0.0000	20.2800	20.2900	33,529,367	0.0000	CD Value (12,26,9,10,1) is Less Than Intraday MACD Signal Line (12,26,9,10,1)

COOLTRADER PRO

	Long	Short
Start Time:	08:30	08:30
Stop Time:	12:30	12:30
Remaining:	0:00	0:00
Max Trades:	5	5
Symbols:	7	1

Start time will tell you what time the Robotic Trader will start opening positions. The stop time will tell you what time you have set the Trader to stop opening. Remaining refers to the time left in the trading session. Max Trades will tell you how many positions the trader can buy. Symbols will tell you how many stocks are loaded in your system (Open Positions + Watchlist)

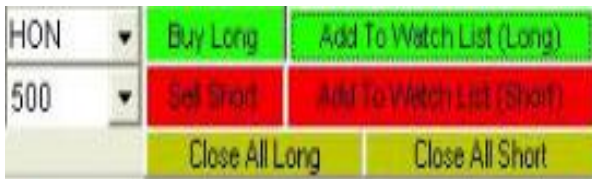
Dow:	-61.23	■	■	■	■	■
Nasdaq:	-11.82	■	■	■	■	■
S&P 100:	-7.92	■	■	■	■	■
E-Mini:	3.25	■	■	■	■	■

This box will provide you with current market data from the Dow Jones, Nasdaq, S&P 100 and the E-Mini. The E-Mini is the most popular equity index for futures contract in the world.



The Toggle Screen allows you to minimize the size of your Trader to easily view other programs and icons on your desktop. Day Trades Left will indicate how many day trades you have left designed to comply with SEC Day Trading Rules. 999 = unlimited

COOLTRADER PRO



This feature will allow **you to buy and sell** your open positions and allow you to open new positions manually. Not necessary but available.

Account Value box below will provide you with detailed account info.

A screenshot of the 'Account Values' section in the trading software. It features a navigation bar with tabs for 'Account Values', 'Connectivity', 'Show Chart', 'Show Trades', and 'System Activity'. Below the tabs, there are several settings: a checked checkbox for 'Utilize 2-1 Margin', an unchecked checkbox for 'Utilize 4-1 Margin', and a 'Session P/L: 1.37%' with an 'Edit' button. A note states: 'Reserve enough funds to purchase Max shares set in Strategy. Regardless of account balance, CoolTrade should never utilize more than \$ 2,000,000'. At the bottom, a table displays account statistics:

Current Account Value	Funds Allocated	Funds Available
\$ 30,380	\$ 53,900	\$ 2,303

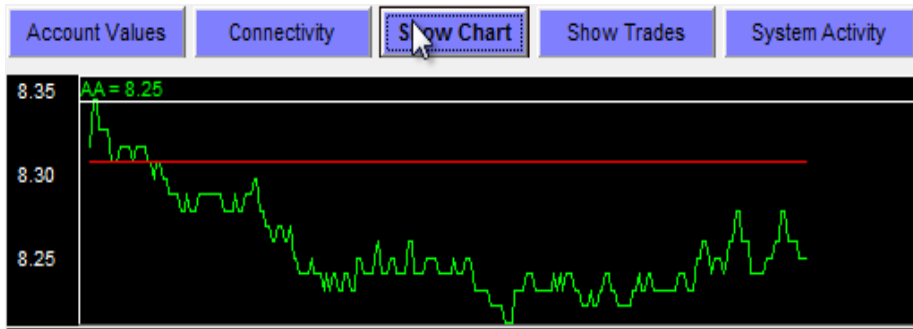
This Feature will provide you the following information. If 2-1 one margin is being used. If 4-1 Margin is being used (**For Day Traders Only**)

By clicking edit you can modify these settings. This feature will also provide **Current Account Value, Funds Allocated and Funds available for trading**. You can also adjust **Regardless of account balance, CoolTrade should never utilize more than** whatever you would like to set it for. The system will then set a trading limit on the strategy and funds used.

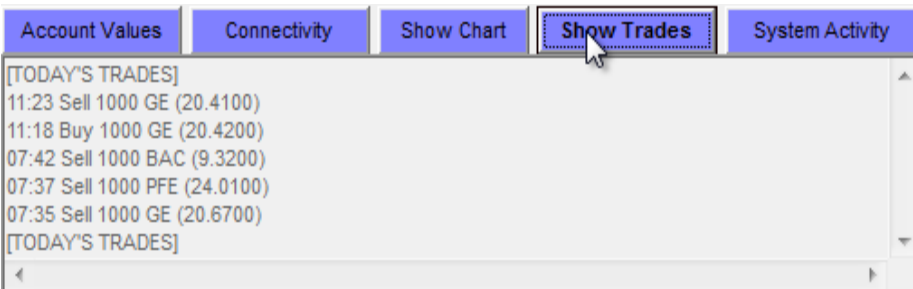
COOLTRADER PRO



Connectivity: Will tell you if and when you lost internet connection and what time it was able to restore it. Designed for informational purposes only.



Show Chart: This will allow you to see intraday charts provided as a quick reference on each symbol that the Robotic Trader is tracking.



Show Trades: Quick reference of any positions opened and closed during the trading session. Reflects the stock price at time trade was submitted to broker.

COOLTRADER PRO

Account Values | Connectivity | Show Chart | Show Trades | **System Activity**

[SYSTEM ACTIVITY]
 Check New Position Rules
 Set Active Symbol Data
 Checking Rules To Add to Current Positions or Close Positions
 Set Active Symbol Data
 Check New Position Rules
 Set Active Symbol Data
 Checking Rules to Open New Positions

System Activity: This feature will allow you to see what the Robotic Trader is processing during the day. The Robotic Trader is a number crunching machine monitoring complex market conditions.

Long Watch List: The watch list will display the stocks the Robotic Trader has identified that meet the rules and criteria for your strategy. They can make the watch list and not meet the open position rules. The Rule preventing next trade will tell you why the Robotic Trader is not opening a given position.

Long Watch List(13) : Dow 30 Long Click for Short List

Symbol	Min Price	Max Price	Price To Go	Current Bid	Current Ask	Today's Volume	Today's Change	Rule Preventing Next Trade
AA	0.0000	999.0000	0.0000	8.2500	8.2600	7,765,419	-0.0600	CD Value (12,26,9,10,1) is Less Than Intraday MACD Signal Line (12,26,9,10,1)
CERN	0.0000	999.0000	0.0000	76.5800	76.6300	337,037	-0.0600	Current Ask-Bid Range Too Wide: 0.0500
CSCO	0.0000	999.0000	0.0000	17.8300	17.8400	75,348,028	0.9800	CD Value (12,26,9,10,1) is Less Than Intraday MACD Signal Line (12,26,9,10,1)
DD	0.0000	999.0000	0.0000	42.7200	42.7300	3,727,971	-0.1900	CD Value (12,26,9,10,1) is Less Than Intraday MACD Signal Line (12,26,9,10,1)
DIS	0.0000	999.0000	0.0000	47.6900	47.7000	5,415,130	-0.2700	CD Value (12,26,9,10,1) is Less Than Intraday MACD Signal Line (12,26,9,10,1)
HPQ	0.0000	999.0000	0.0000	13.2100	13.2200	17,002,589	0.0800	CD Value (12,26,9,10,1) is Less Than Intraday MACD Signal Line (12,26,9,10,1)
INTC	0.0000	999.0000	0.0000	20.2800	20.2900	33,635,543	0.0000	CD Value (12,26,9,10,1) is Less Than Intraday MACD Signal Line (12,26,9,10,1)
JPM	0.0000	999.0000	0.0000	39.6800	39.6900	18,807,664	-0.3600	CD Value (12,26,9,10,1) is Less Than Intraday MACD Signal Line (12,26,9,10,1)

COOLTRADER PRO



Inventory: The screen below represents your open positions and will tell you what positions you own and indicate exactly where you stand minute by minute throughout the trading day. The next page will feature definitions and explanations of each one of these columns.

Positions: Long(0), Short(3)-

Symbol	Side	Position	Avg Cost		Price	Position	Position	Net	Today's	Bid Price	Ask Price	Volume	Change
	Action	Quantity	Entry Price	Lmt Price	To Go	Change\$	Change%	P&L	P&L			Reached	Status
TOTAL								+ 460.00	+ 460.00				
GE	Short	-1000	20.4100					+ 240.00	+ 240.00	20.4100	20.4200	27,711,401	- 0.2700
	Buy	1000	20.6700	20.4200	0.0000	0.2600	1.2579%	+ 250.00	+ 250.00			Y	Closed
	Buy	1000	20.4100	20.1100	-0.3100	0.0000	0.0000%	- 10.00	- 10.00				Stealth
PFE	Short	-1000	24.0100					+ 80.00	+ 80.00	23.9300	23.9300	18,872,834	- 0.1200
	Buy	1000	24.0100	23.7100	-0.2200	0.0800	0.3332%	+ 80.00	+ 80.00				Stealth
BAC	Short	-1000	9.3200					+ 140.00	+ 140.00	9.1700	9.1800	124,490,698	- 0.1500
	Buy	1000	9.3200	9.0200	-0.1600	0.1500	1.6094%	+ 140.00	+ 140.00				Stealth

Symbol: Tells you what stocks you own. Each trader will manage up to 100 positions

Side: Reports if you are long or short on stock.

Action: Informs you if it is trying to buy or sell to close a position for profit

Position: How many shares you have per position

Quantity: How many shares you are trading per lot

Avg Cost: provides you average cost per when multiple lots are owned.

Entry: Tells you how much you paid for a given position

COOLTRADER PRO

Inventory: The screen below represents your open positions and will tell you what positions you own and indicate exactly where you stand minute by minute throughout the trading day. The next page will feature definitions and explanations of each one of these columns.

Positions: Long(0), Short(3) -

Symbol	Side	Position	Avg Cost		Price	Position	Position	Net	Today's	Bid Price	Ask Price	Volume	Change
	Action	Quantity	Entry Price	Lmt Price	To Go	Change\$	Change%	P&L	P&L			Reached	Status
TOTAL								+ 460.00	+ 460.00				
GE	Short	-1000	20.4100					+ 240.00	+ 240.00	20.4100	20.4200	27,711,401	- 0.2700
	Buy	1000	20.6700	20.4200	0.0000	0.2600	1.2579%	+ 250.00	+ 250.00			Y	Closed
	Buy	1000	20.4100	20.1100	-0.3100	0.0000	0.0000%	- 10.00	- 10.00				Stealth
PFE	Short	-1000	24.0100					+ 80.00	+ 80.00	23.9300	23.9300	18,872,834	- 0.1200
	Buy	1000	24.0100	23.7100	-0.2200	0.0800	0.3332%	+ 80.00	+ 80.00				Stealth
BAC	Short	-1000	9.3200					+ 140.00	+ 140.00	9.1700	9.1800	124,490,698	- 0.1500
	Buy	1000	9.3200	9.0200	-0.1600	0.1500	1.6094%	+ 140.00	+ 140.00				Stealth

Limit Price: This tells you what your goal price is on a position

Price to Go: Tells you how far much the stock needs to move to close the position

Position Change\$: Gives you the price move compared to the entry price

Position Change%: Gives you the percentage change from entry price

Net P&L: Very Important This is the net of the open positions. Check report for profit taken.

Today's P&L: Tells you if your portfolio is up or down for the day

Bid and Ask Price: Provides you the current trade price on every symbol

COOLTRADER PRO



Inventory: The screen below represents your open positions and will tell you what positions you own and indicate exactly where you stand minute by minute throughout the trading day. The next page will feature definitions and explanations of each one of these columns.

Positions: Long(0), Short(3)

Symbol	Side	Position	Avg Cost		Price	Position	Position	Net	Today's	Bid Price	Ask Price	Volume	Change
	Action	Quantity	Entry Price	Lmt Price	To Go	Change\$	Change%	P&L	P&L			Reached	Status
TOTAL								+ 460.00	+ 460.00				
GE	Short	-1000	20.4100					+ 240.00	+ 240.00	20.4100	20.4200	27,711,401	- 0.2700
	Buy	1000	20.6700	20.4200	0.0000	0.2600	1.2579%	+ 250.00	+ 250.00			Y	Closed
	Buy	1000	20.4100	20.1100	-0.3100	0.0000	0.0000%	- 10.00	- 10.00				Stealth
PFE	Short	-1000	24.0100					+ 80.00	+ 80.00	23.9300	23.9300	18,872,834	- 0.1200
	Buy	1000	24.0100	23.7100	-0.2200	0.0800	0.3332%	+ 80.00	+ 80.00				Stealth
BAC	Short	-1000	9.3200					+ 140.00	+ 140.00	9.1700	9.1800	124,490,698	- 0.1500
	Buy	1000	9.3200	9.0200	-0.1600	0.1500	1.6094%	+ 140.00	+ 140.00				Stealth

Volume: Will indicate how many shares have shares have exchanged hands during the trading session.

Reached: If a Y appears it indicates we have reached profit goal. P indicates a gain is being profit protected.

Change/Status: Stealth mode indicates that the CoolTrade system is hiding all orders from public view. By adding this feature we are invisible to the day traders, level two screens and institutional computers.

COOLTRADER PRO

The **File Menu** located on the upper right hand corner of the Robotic Trader will allow you to access, manage and control several features. This section will cover each important item under the file menu.

1. My Subscription



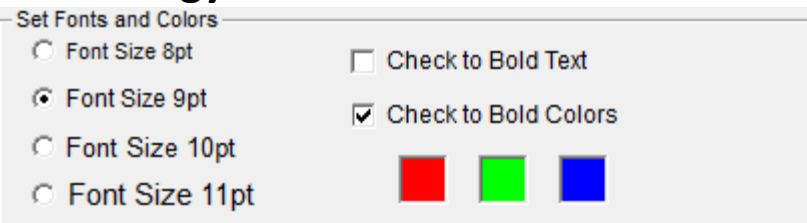
TheStreet.Com Action Alerts Plus!



User Name Password

This feature will allow you to set your Robotic Trader to follow Jim Cramer and his Action Alerts. If you would like your trader to follow Jim enter your username and password and select trade with Jim Cramer in the Strategy Wizard.

2. Strategy Preferences



Set Fonts and Colors

Font Size 8pt Check to Bold Text

Font Size 9pt Check to Bold Colors

Font Size 10pt

Font Size 11pt

The first box will allow you to adjust the color scheme and the trader font sizes.

COOLTRADER PRO



- Run in Stealth Mode (Hides limit orders from the public)
- Halt Trading Upon Application Startup
- Close Your Brokers Application on Program Exit
- Schedule Weekly Chkdsk (Recommended)
- Schedule Trader To Start Each Day 06 : 00 AM
- Stop Trader Each Day 07 : 55 PM
- Trade Alert Bell Duration: 00

This feature will allow you to manually Schedule the Trader to start and turn off each day. You also can adjust the trade bell duration. The Robotic Trader is set to ring to notify you that it is in the process of opening or closing a position.

- Would Like To Share My Strategies**
 - Display Name: Anonymous
 - Display Name: caryflanders

This feature will allow you to share your strategies with the CoolTrade community.

-
- Auto Acceptance Of CoolTrade Trade Entry (Supresses Trade Confirmation Pop-Ups)
- Suppress Fully Automated Trader Running Message
- Suppress Confirmation On Program Exit

After you have agreed to all CoolTrade terms and conditions you can check the following boxes. This will ensure that the windows task scheduler will be able to launch the program and trade 100% unattended.

COOLTRADER PRO

Alerts

If CHECKED, anytime your Robotic Trader makes a trade, it will send an Alert to this email address:

(example: john.doe@xyz.com)

Alerts: Allow you to receive email notifications when the Robotic Trader executes a trade.

Handling of odd-lot shares resulting from stock-splits

Sell off the odd-lot shares Place symbol in Exception Folder

Add shares to make it a full-lot Block symbol from CoolTrade

Handling of odd lots: Allows you to tell the Trader how to handle odd lots resulting from a stock split.

Stop All Round Trips When DayTradesRemaining is less than

Enforce SEC Day Trader Rules (for accounts under \$25,000).

Continue Opening New Positions

Continue Closing Positions Opened On Previous Days

Always Enforce Day Trader Rules, Regardless of Account Balance.

SEC Day Trading Rules: The system is designed to comply with SEC Day trading rules for accounts under 25k.

Funds Allocation

Use 2-1 Margin Buying Power. Use 4-1 Margin Buying Power.

Reserve enough funds to purchase Max shares set in Strategy.

Regardless of my account balance, CoolTrade should never utilize more than this amount.

	Current Account Value	Funds Allocated	Funds Available
<input type="button" value="Edit"/>	\$ 30,500	\$ 54,020	\$ 2,405

Funds Allocated: This feature allows you manage your account in simulation mode and control margin and funds you are authorizing the Robotic Trader to utilize.



- 3. Trader Preferences:** Will allow you to manage and change your Robotic Trader start and stop times. You will always want to make sure the Trader is set to trade **ONLY** during market hours.
- 4. Download Developer Version:** Will allow you to download any updates that have been released to the community at no additional charge. If you have any issues with your Robotic Trader the first step in trouble shooting should be to download the developer version.
- 5. CoolTrade Community Board:** You will have access to the community and are welcome to ask questions, provide feedback or join in on a discussion.
- 6. CoolTrade Manuel:** Access and review detailed system manuel.
- 7. CoolTrade Website:** Will link you to the CoolTrade website.

COOLTRADER PRO

Blocked Symbols

Blocked Symbols List

Enter symbol: [Click to Add Symbol To Blocked List](#)

Blocked List

MMDA1
ZTD82
LNG
LRDC

[Click to Remove Selected Symbol From Blocked List](#)

[Return](#)

Enter symbols on this screen that you do not want to be auto traded. As long as the symbol is in the Blocked List, it will not show up in your Long or Short Watch List.

Note: Blocked symbols are not reported to the CoolTrade Automated Trader by the broker (InteractiveBrokers.com).

Blocked Symbols: This feature located next to the file button will allow you to block one or several symbols on your watch list. If your Robotic Trader identified a stock as an opportunity and you wanted to manually remove it from the watch list just enter the symbol and click the add symbol to the blocked list. The system will no longer have the ability to trade the stock.



COOLTRADER PRO

8. Open New Brokerage Account: The best place to join one of our broker partners. Open the icon and take advantage of special offers ONLY available to CoolTrade customers.

Trading Partners



MB TRADING



Interactive Brokers
The Professional's Gateway to the World's Markets



9. Email CoolTrade: Will allow you to directly send an email to customersupport@cool-trade.com.

10. Change Password: Will allow you to change existing password.

11. Schedule Check Disk Repair: We recommend that you run a Disk Repair once a month. This will help maintain your operating system and keep it performing well.

12. Log off and (Clear all Passwords): If you would like to end a current simulated strategy and start a new one you can log off and clear all passwords. When you restart the program click file on the Broker/Partner page and select refresh for new strategy.

COOLTRADER PRO



Show Charts: This feature will allow you to look at more detailed charts and apply a variety of technical indicators to any symbol owned or in the watch list.

The screenshot shows the 'Exceptions' window in the software. It has a title bar with the text 'Exceptions' and standard window controls. Below the title bar, there is an 'Exit' button. The main content area is titled 'Symbol Exceptions' and contains a yellow highlighted message: 'The symbols remain in this folder until their data has been received.' Below this message is a table with the following data:

Symbol	Long	Short	Shares	Explanation
KFT	Long		0	Retrieving Price Data ...
KFT		Short	0	Retrieving Price Data ...

Symbol Exceptions: If the broker ever has an issue filling an order the Robotic Trader will move the symbol into the exceptions folder. If you would like to pursue the trade please contact broker.

COOLTRADER PRO

Personal Loaded Symbols

Personal Long Watch List

Enter symbol: [Click to Add Symbol To Personal Long Watch List](#)

Long Watch List

BAC
CERN

[Click to Remove Selected Symbol From Personal Long Watch List](#)

Personal Short Watch List

Enter symbol: [Click to Add Symbol To Personal Short Watch List](#)

Short Watch List

--

[Click to Remove Selected Symbol From Personal Short Watch List](#)

[Return](#)

Enter symbols on this screen that you always want added to the current days Long and/or Short Watch List.

Note: Symbols added to either of these lists will be included in the Long and/or Short Watch Lists regardless of whether or not they meet the criteria established in the current strategy loaded.

Personal: This feature will allow you to add a symbol to your long watch list and or your short watch list. Once the symbol is added to your watch list the Robotic Trader will follow the rules of the strategy in determining when to open and close the positions. Note: If entered they will be added to the watch list regardless of whether or not they meet the watch list rules in the strategy.

COOLTRADER PRO

Reports

Exit

Report History

Enter Report Criteria and Press Create Report Button

All Symbols SYMBOL

Long: All Long Strategies

Short: All Short Strategies

Show Closed Trades (Detail)

Within: Today

From: 11 : 14 : 2012 to 11 : 14 : 2012

Create Report

COOLTRADE REPORT
11/14/2012

Email: caryflanders@gmail.com
Symbols: All Symbols
Status: Show Closed Trades (Detail)
Long: All Long Strategies
Short: All Short Strategies
Timeframe: Today

Reports: This is one of the most important features on the Robotic Trader Dash Board. This feature will allow you to review all of your open and closed trades. This easy to use drop down system will allow you to search all symbols or individual symbols. You can run a report for the today, the past week, past month, past year or define a time range that you would like to review. To calculate your net return you will need to subtract your profit taken on the report from the net P&L number on your trader dash board. Watch how fast your profits add up over time.

COOLTRADER PRO

Reports: The Report will detail when the Robotic Trader opened the position, when it closed the position, name the symbol, tell you if you were long or short, detail the buy and sell price, number of shares and profit take. The report does not include broker commissions. Refer to your brokerage statement for official Profit and Loss details.

Show Closed Trades (Detail)

Open	Time	Close	Time	Symbol	L/S	Bought	Sold	Shares	P/L
11/14/12	07:35	11/14/12	11:18	GE	Short	20.42	20.67	1000	250.00
Grand Total:									250.00

Rules: This button located next to reports on the dash board will allow you to review the rules of your strategy and all of the calculations on each symbol minute by minute during the trading day. The Trader is a number crunching machine.

AA
Long Watch List

Open New Position Rules (ALL CONDITIONS MUST BE TRUE)

OPEN POSITION RULES

Intraday MACD Value (12,26,9,10,1) < Intraday MACD Signal Line (12,26,9,10,1)
 MinuteMacdValue (12 , 26 , 9 , 10 , 1) : 0.0000
 MinuteMacdSignalLine (12 , 26 , 9 , 10 , 1) : 0.0000

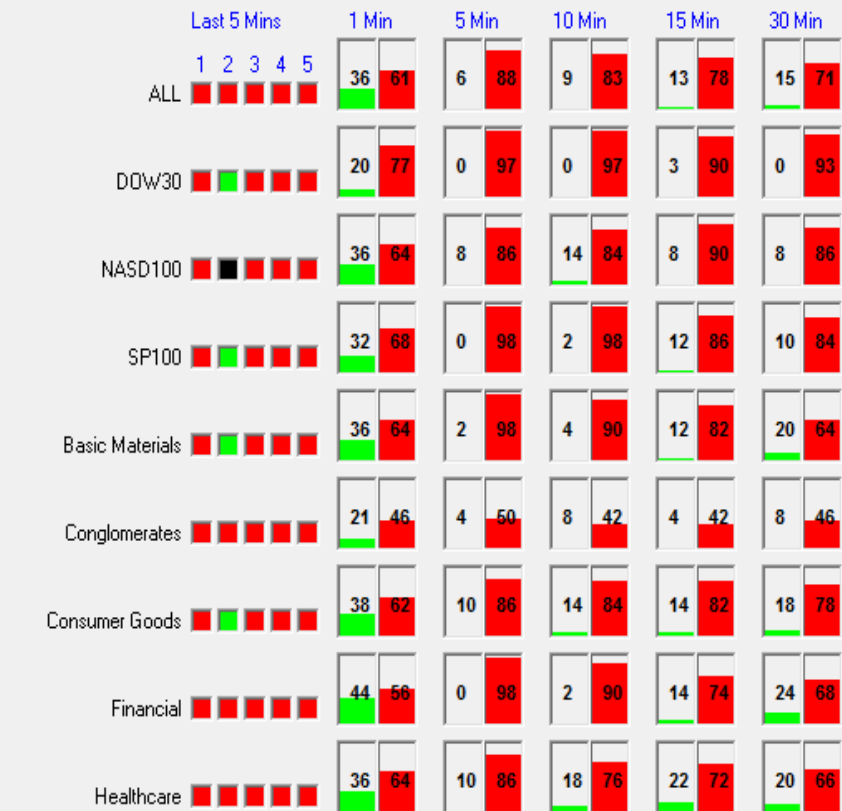
Intraday MACD Value (12,26,9,10,0) > Intraday MACD Value (12,26,9,10,1)
 MinuteMacdValue (12 , 26 , 9 , 10 , 0) : 0.0000
 MinuteMacdValue (12 , 26 , 9 , 10 , 1) : 0.0000

Intraday MACD Value (12,26,9,10,0) > Intraday MACD Signal Line (12,26,9,10,0)
 MinuteMacdValue (12 , 26 , 9 , 10 , 0) : 0.0000

COOLTRADER PRO

Sector Graphs

This screen shows the percentage of symbols UP and the percentage of symbols DOWN in each SECTOR during the specified time frames.



Sector Graph: The sector graph provides market data regarding percentage of stocks up versus percentage of stocks down minute by minute during the trading day. The system utilizes this as an indicator to identify intraday market trends.



COOLTRADER PRO

Section II

Strategy Wizard: When you launch the Strategy Wizard you will first arrive at the Strategy Wizard portal. Here you can select, copy, create or modify a strategy. Each system comes with 5 long and 5 short strategies for simulating.

CoolTrade Strategy Wizard v.7.4.9 nrausch Indicator Data Last Updated: Friday, December 14, 2012

File My Subscriptions Retrieve All WatchLists Help Video Help Exit

CoolTrade Fully Automated / Robotic Trading System Strategies

BUY / LONG Strategies				SELL / SHORT Strategies			
Active	Watch List			Active	Watch List		
(Click on Long Strategy Name to Edit)				(Click on Short Strategy Name to Edit)			
<input checked="" type="checkbox"/>	18	Conservative Long Strategy (NoStop Loss)	Options	<input checked="" type="checkbox"/>	1	Conservative Short Strategy (NoStop Loss)	Options
<input type="checkbox"/>		anonymous, funds: \$ 153,121, mret: \$ 11,179	Options	<input type="checkbox"/>		Aggressive Short Strategy	Options
<input type="checkbox"/>		SMA Long Swingtrade Strategy	Options	<input type="checkbox"/>		SMA Short Swingtrade	Options
<input type="checkbox"/>		2.00 stocks and below	Options	<input type="checkbox"/>		Aggressive Short Strategy	Options
<input type="checkbox"/>		robot, funds: \$ 70,564, mret: \$ 4,854	Options	<input type="checkbox"/>		mvinn, funds: \$ 29,444, mret: \$ 935	Options
(Click on Long Strategy Name to Edit)				(Click on Short Strategy Name to Edit)			
Downloaded Long Strategies				Downloaded Short Strategies			

COOLTRADER PRO

Active	Watch List	BUY / LONG Strategies	
		(Click on Long Strategy Name to Edit)	
<input checked="" type="checkbox"/>	18	Conservative Long Strategy (NoStop Loss) anonymous, funds: \$ 153,121, mret: \$ 11,179	Options
<input type="checkbox"/>		SMA Long Swingtrade Strategy	Options
<input type="checkbox"/>		2.00 stocks and below	Options
<input type="checkbox"/>		robot, funds: \$ 70,564, mret: \$ 4,854	Options

Clicking the options button will allow you to do the following.

- 1) Copy a Strategy
- 2) Print a Strategy
- 3) Access the Community Board
- 4) View Top User Strategies

To begin select a strategy. Each system will run one long and one short strategy. Each system has the ability to manage up to 100 long positions, 100 short positions and 2 million dollars. To access the strategy **click on the words of the Strategy** and it will take you into the Strategy Wizard where you can review and modify existing strategies. The Strategy Wizard is composed of 6 tabs and requires no programming. The next section will walk you through the features and how to use them.

COOLTRADER PRO

To **Copy a Strategy** click **options** next to the strategy you want to replace and select **copy strategy**. This will bring up the community board copy strategy screen and will allow you to review and copy strategies shared on the community board.

Active	Watch List	BUY / LONG Strategies
<input type="checkbox"/>		<p>(Click on Long Strategy Name to Edit)</p> <p>Conservative Long Strategy (NoStop Loss) Options</p>

Select Copy Strategy

Strategy Tools

- Copy Strategy
- Print Strategy

Copy Source

Copy Strategy From:

(nrausch@mjmcapitalgroup.com is authorized to copy from these members)

Source Long Strategy

Copy From Source Long Strategies

- Conservative Long Strategy (NoStop Loss) [Print](#)
- anonymous, funds: \$ 153,121, mret: \$ 11,179 [Print](#)
- 2.00 stocks and below [Print](#)
- 3 to 5 dollar stocks [Print](#)
- robot, funds: \$ 70,564, mret: \$ 4,854 [Print](#)

Double click in the Copy Strategy from box and use your up and down keys to view strategies shared within the community. To view a strategy click **Print and to **copy a strategy** click your mouse in the circle to the left of the strategy. Once the circle is checked you are ready to copy the strategy check out next page.**

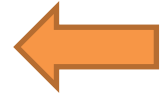
COOLTRADER PRO

Copy Destination

Copy Strategy To:

NRAUSCH@MJMCAPITALGROUP.COM

(nrausch@mjmcapitalgroup.com is authorized to write to these members)



Destination Long Strategy

To Destination Long Strategies

Conservative Long Strategy (NoStop Loss)

[Print](#)

anonymous, funds: \$ 153,121, mret: \$ 11,179

[Print](#)

2.00 stocks and below

[Print](#)

3 to 5 dollar stocks

[Print](#)

If you would like to **rename the strategy** or make comments you can do that in the box to the right.

To Complete the next step click in the circle next to the left of the strategy you would like to replace.

Use My Local Start and Stop Times

New Strategy Name: 2.00 stocks and below

New Comments: Sample strategy for example purposes only.

Copy Strategy

Cancel

Friends Lists

Once you have done this you are ready to rename the strategy and click **Copy Strategy**. Strategy will then copy to your strategy page

COOLTRADER PRO

Section II

Strategy Wizard: Now that you know how to copy a strategy lets take a look at how to modify a strategy through the strategy wizard. **Click on the words of the strategy you would like to view or modify** and you will enter the strategy wizard.

CoolTrade Strategy Wizard v.7.4.9 nrausch Indicator Data Last Updated: Friday, December 14, 2012

File My Subscriptions Retrieve All WatchLists Help Video Help Exit

CoolTrade Fully Automated / Robotic Trading System Strategies

Active	Watch List	BUY / LONG Strategies	Options
<input checked="" type="checkbox"/>	18	(Click on Long Strategy Name to Edit) Conservative Long Strategy (NoStop Loss) anonymous, funds: \$ 153,121, mret: \$ 11,179	Options
<input type="checkbox"/>		SMA Long Swingtrade Strategy	Options
<input type="checkbox"/>		2.00 stocks and below	Options
<input type="checkbox"/>		robot, funds: \$ 70,564, mret: \$ 4,854	Options

(Click on Long Strategy Name to Edit)

Active	Watch List	SELL / SHORT Strategies	Options
<input checked="" type="checkbox"/>	1	(Click on Short Strategy Name to Edit) Conservative Short Strategy (NoStop Loss)	Options
<input type="checkbox"/>		Aggressive Short Strategy	Options
<input type="checkbox"/>		SMA Short Swingtrade	Options
<input type="checkbox"/>		Aggressive Short Strategy	Options
<input type="checkbox"/>		mvinn, funds: \$ 29,444, mret: \$ 935	Options

(Click on Short Strategy Name to Edit)

Downloaded Long Strategies Downloaded Short Strategies

Strategy Preferences

This tab will allow you to adjust and set your Robotic Trader Preferences

Add To Current Position Rules (4)	Exit Trade Rules (5)	Profit Requirements (6)	Strategy Statistics (7)	Current Watch List Click Symbol for Chart ANR APOL ATI BTH BTU CNX FNSR HPQ MMR NAV NXY RIMM TEX TNS TPX WLT X YPF
Auto Trader Preferences (1)	Watch List Rules (2)	Open New Position Rules (3)		

Set the Automated Trader Preferences For This Strategy Here

Strategy Name:

Comments:

Trading Shares: 100 Shares Per Trade
 Max Shares: 500 Shares Per Symbol

Edit Share Lot Sizes

Maximum Symbols To Purchase:

Max Range To Spread Trades Across:

Minimum Purchase Interval:

Max Bid/Ask Range:

Open New Position Time Range (based on your PC time)

Start Checking to Open New Positions: :

Stop Checking to Open New Positions: :

Add Shares To Existing Positions Time Range (based on your PC time)

Start Checking to Add to Existing Positions: :

Stop Checking to Add to Existing Positions: :

Close Positions Time Range (based on your PC time)

Start Checking to Close Positions: :

Stop Checking to Close Positions: :

Start Closing All Open Positions At This Time Each Day: :

Close Open Positions That Have Reached Their Goal: :

Close Open Positions That Have Made This Much Profit: :

Profit Amount \$

Verify Start / Stop Times

Use These Start / Stop Times In All of My Strategies:

Make This The Active Strategy In The Automated Trader:

WatchList Count: 18 Good!

COOLTRADER PRO

Strategy Preferences

This field will enable you to name or rename a strategy.

Strategy Name:

Comments:

Below field will allow you to tell the Robotic Trader how many shares you want to trade and provide further definition such as how much to spend per symbol.

Trading Shares: 100 Shares Per Trade
Max Shares: 500 Shares Per Symbol

[Edit Share Lot Sizes](#)

Edit number of shares and max shares to purchase. You can also give the trader further definition and set max dollar amount to spend per position. You also have the ability to allocate based on a percentage of your purchasing power.

Fixed Lot Size

Number of Shares to purchase for each trade

Max shares to be purchased per stock symbol

5

Estimated Trades

Lot Size Based on Fixed Dollar Amount

Investment amount per trade (will purchase as many shares as this amount will allow for each trade)

Maximum Investment Amount Per Stock Symbol

Minimum Shares Per Trade

Maximum Shares Per Trade

COOLTRADER PRO

Set Number of Symbols to buy

Maximum Symbols To Purchase:	20
Max Range To Spread Trades Across:	10.00
Minimum Purchase Interval:	0.25
Max Bid/Ask Range:	00.02000

This section will allow you to select the number of shares that you want your Robotic Trader to purchase and trade. Max Bid/Ask spread is set to .02 as a default to protect you from entering a position with an wide spread.

Robotic Trader Start and Stop Times

Open New Position Time Range	(based on your PC time)
Start Checking to Open New Positions:	07 : 30 AM
Stop Checking to Open New Positions:	01 : 30 PM
Add Shares To Existing Positions Time Range	(based on your PC time)
Start Checking to Add to Existing Positions:	07 : 30 AM
Stop Checking to Add to Existing Positions:	01 : 30 PM
Close Positions Time Range	(based on your PC time)
Start Checking to Close Positions:	07 : 30 AM
Stop Checking to Close Positions:	01 : 58 PM

Each of these fields can be customized and must be set to trade during US market hours and should correspond to your computer time. First box is Open position time range, Second Add to position time range and third the close positions that are profitable time range.

COOLTRADER PRO

Additional Times to Set

Start Closing All Open Positions At This Time Each Day:	<input type="checkbox"/>	01	:	55	PM	<input type="button" value="Verify Start / Stop Times"/>
Close Open Positions That Have Reached Their Goal:	<input checked="" type="checkbox"/>	01	:	45	PM	
Close Open Positions That Have Made This Much Profit:	<input checked="" type="checkbox"/>	01	:	50	PM	

- 1) If you would like to day trade you can click **Start Closing open positions at this time each day** and set the time you would like to close your positions.
- 2) **Close open positions that have reached profit goal** should be set atleast 10 minutes before market close
- 3) **Close Open Positions that have made this much profit.** You can set the time and minimum profit you are willing to take at the end of the day.

We have now completed the Strategy Preferences page and will now review the Watch List tab where we will learn how to identify and select the stocks we want the Robotic Trader to buy and sell.

COOLTRADER PRO

Watch List Tab

Add To Current Position Rules (4)		Exit Trade Rules (5)		Profit Requirements (6)		Strategy Statistics (7)		Current Watch List
Auto Trader Preferences (1)		Watch List Rules (2)		Open New Position Rules (3)				Click Symbol for Chart

Historical Data rules for selecting which stocks will be candidates for the current trade day
(right-click indicator for description)

Dividend Rate

Dividend Yield %

52-Week High

52-Week Low

5-Year Growth Rate %

Historical Volatility

Institutional Ownership Percent

Long Term Debt

MarketCap

Next Year EPS

Price Earnings Ratio

TECHNICAL INDICATORS (select by value)

Average True Range(14)

Value

Percent

Shares

Bars

Days

0.5

Less Than

Greater Than

Less Than or Equal

Greater Than or Equal

Equal

ADD RULE

(right-click indicator for description)

Yesterdays Close Price

Yesterdays Open Price

Yesterdays High Price

Yesterdays Low Price

Yesterdays Volume

ABS(Open-Close) Amount 1 Day Ago

ABS(Open-Close) Amount 2 Days Ago

ABS(Open-Close) Amount 3 Days Ago

ABS(Open-Close) Amount 4 Days Ago

ABS(Open-Close) Amount 5 Days Ago

ABS(Open-Close) Percent 1 Day Ago

ABS(Open-Close) Percent 2 Days Ago

ABS(Open-Close) Percent 3 Days Ago

Exchanges

AMEX

NASDAQ

NYSE

ASX (Australia)

HKEX (H-Kong)

NSE (India)

SGX (Singapore)

TSE (Toronto)

FOREX

Sectors

Select All

Dow 30

NASD 100

S&P 100

Basic Matrls ?

Conglomerats ?

Cons Goods ?

Financial ?

Healthcare ?

Indst Goods ?

Services ?

Technology ?

Utilities ?

UNKNOWN

Current Watch List

ANR

APOL

ATI

BTH

BTU

CNX

FNSR

HPQ

MMR

NAV

NXY

RIMM

TEX

TNS

TPX

WLT

X

YPF

Average True Range(14) is Greater Than 0.5 Dollars

**DELETE
SELECTED
RULES**

WatchList
Count
18
Good!

Average True Range(14) is Greater Than 0.50 Dollars

Average True Range%(14) is Greater Than 3

Yesterdays Volume is Greater Than 250000 Shares

10-Day Average Volume is Greater Than 250000 Shares

20-Day Average Volume is Greater Than 250000 Shares

30-Day Average Volume is Greater Than 250000 Shares

50-Day Average Volume is Greater Than 250000 Shares

5-Day Average Volume is Greater Than 250000 Shares

Institutional Ownership Percent is Greater Than 10

10-Day SMA is at least 0.35 Dollars Greater Than 20-Day SMA

3-Day SMA is Greater Than 18-Day SMA

5-Day SMA is Greater Than 18-Day SMA

5-Day SMA is at least 0.35 Dollars Greater Than 10-Day SMA

Yesterdays Close Price is Greater Than 4 Dollars

Yesterdays Close Price is Less Than 40 Dollars

MY PORTFOLIO

Verify Symbols

Add My Portfolio to the Watch List

Add My Symbol Files to the Watch List

Use My Portfolio or Symbol Files Only
(Disables Watch List Rules)

COOLTRADER PRO

Trade the US Markets or explore the World with CoolTrader pro. Just point and click

First step is to select the exchanges you would like to trade. The default settings are AMEX, NASDAQ and the NYSE.

CoolTrade has also automated the following exchanges if you would like to trade one of the foreign exchanges offered you will need a account with Interactive Brokers.

Exchanges

- AMEX
- NASDAQ
- NYSE

- ASX (Australia)
- HKEX (H-Kong)
- NSE (India)
- SGX (Singapore)
- TSE (Toronto)

- FOREX



Select and search all sectors or focus on one with CoolTrade

Sectors

- Select All
- Dow 30
- NASD 100
- S&P 100
- Basic Matrls
- Conglomerats
- Cons Goods
- Financial
- Healthcare
- Indst Goods
- Services
- Technology
- Utilities
- UNKNOWN

If you want to trade FOREX you will need an account with our Broker/Partner FXCM

COOLTRADER PRO

MY PORTFOLIO

HAL MSFT CSCO BAC
Verify Symbols



My Portfolio: If you would like the Robotic Trader to trade your favorite stocks you can enter in the box and click verify symbol.

- Add My Portfolio to the Watch List
- Add My Symbol Files to the Watch List
- Use My Portfolio or Symbol Files Only
(Disables Watch List Rules)



You will then need to check add my Portfolio to the watch list and check use my portfolio or symbol files only.

WatchList Count 13 Good!



Displays the number of symbols on the watch list

Current Watch List
Click Symbol for Chart
ANR
APOL
ATI
BTH
BTU
CNX
FNSR
HPQ
MMR
NAV
NXY
RIMM
TEX
TNS
TPX
WLT
X
YPF

COOLTRADER PRO

Watch List Tab

This section will allow you to build or modify the watch list rules in your strategy

Historical Data rules for selecting which stocks will be candidates for the current trade day

(right-click indicator for description)

Dividend Rate
Dividend Yield %
52-Week High
52-Week Low
5-Year Growth Rate %
Historical Volatility
Institutional Ownership Percent
Long Term Debt
MarketCap
Next Year EPS
Price Earnings Ratio

TECHNICAL INDICATORS (select by value)

Average True Range(14)

0.5

- Value
- Percent
- Shares
- Bars
- Days

- Less Than
- Greater Than
- Less Than or Equal
- Greater Than or Equal
- Equal

ADD RULE

(right-click indicator for description)

Yesterdays Close Price
Yesterdays Open Price
Yesterdays High Price
Yesterdays Low Price
Yesterdays Volume

ABS(Open-Close) Amount 1 Day Ago
ABS(Open-Close) Amount 2 Days Ago
ABS(Open-Close) Amount 3 Days Ago
ABS(Open-Close) Amount 4 Days Ago
ABS(Open-Close) Amount 5 Days Ago

ABS(Open-Close) Percent 1 Day Ago
ABS(Open-Close) Percent 2 Days Ago
ABS(Open-Close) Percent 3 Days Ago

Average True Range(14) is Greater Than 0.5 Dollars

DELETE
SELECTED
RULES

WatchList
Count
18
Good!

Average True Range(14) is Greater Than 0.50 Dollars
Average True Range%(14) is Greater Than 3
Yesterdays Volume is Greater Than 250000 Shares
10-Day Average Volume is Greater Than 250000 Shares
20-Day Average Volume is Greater Than 250000 Shares
30-Day Average Volume is Greater Than 250000 Shares
50-Day Average Volume is Greater Than 250000 Shares
5-Day Average Volume is Greater Than 250000 Shares
Institutional Ownership Percent is Greater Than 10
10-Day SMA is at least 0.35 Dollars Greater Than 20-Day SMA
3-Day SMA is Greater Than 18-Day SMA
5-Day SMA is Greater Than 18-Day SMA
5-Day SMA is at least 0.35 Dollars Greater Than 10-Day SMA
Yesterdays Close Price is Greater Than 4 Dollars
Yesterdays Close Price is Less Than 40 Dollars

This section will detail all of the rules in your strategy and easily allow you to modify, add, delete and adjust existing rules.

COOLTRADER PRO

Watch List Tab

MY PORTFOLIO

HAL
MSFT
CSCO
BAC

Verify Symbols

My Portfolio: If you would like the Robotic Trader to trade your favorite stocks you can enter in the box and click verify symbol.

Add My Portfolio to the Watch List

Add My Symbol Files to the Watch List

Use My Portfolio or Symbol Files Only
(Disables Watch List Rules)

You will then need to check add my Portfolio to the watch list and check use my portfolio or symbol files only.

DELETE SELECTED RULES

WatchList Count
13
Good!

Watch list Count: Displays the number of symbols on the watch list and the **Delete Button** will allow you to easily delete an existing rule.

ADD RULE

Allows you to Add you rule

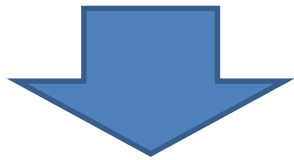
Current Watch List
Click Symbol for Chart
ANR
APOL
ATI
BTH
BTU
CNX
FNSR
HPQ
MMR
NAV
NXY
RIMM
TEX
TNS
TPX
WLT
X
YPF

COOLTRADER PRO

Watch List Tab

The simple point and click system will allow you to create the rules for your strategy.

Step 1 – Select variable from the list below.



Step 2 – Create the rule by selecting and changing the fields below. For Example Yesterdays Volume is Greater Than 1,000,000 Shares.

Step 3 – Once you have clicked and set the variables for your rule check the **yellow highlighted bar** at the bottom of the screen for accuracy then click **ADD RULE**

(right-click indicator for description)

- Yesterdays Close Price
- Yesterdays Open Price
- Yesterdays High Price
- Yesterdays Low Price
- Yesterdays Volume**
- ABS(Open-Close) Amount 1 Day Ago
- ABS(Open-Close) Amount 2 Days Ago
- ABS(Open-Close) Amount 3 Days Ago
- ABS(Open-Close) Amount 4 Days Ago
- ABS(Open-Close) Amount 5 Days Ago
- ABS(Open-Close) Percent 1 Day Ago
- ABS(Open-Close) Percent 2 Days Ago
- ABS(Open-Close) Percent 3 Days Ago

- Value
- Percent
- Shares
- Bars
- Days

- Less Than
- Greater Than**
- Less Than or Equal
- Greater Than or Equal
- Equal

ADD RULE

(right-click indicator for description)

- Yesterdays Close Price
- Yesterdays Open Price
- Yesterdays High Price
- Yesterdays Low Price
- Yesterdays Volume
- ABS(Open-Close) Amount 1 Day Ago
- ABS(Open-Close) Amount 2 Days Ago
- ABS(Open-Close) Amount 3 Days Ago
- ABS(Open-Close) Amount 4 Days Ago
- ABS(Open-Close) Amount 5 Days Ago
- ABS(Open-Close) Percent 1 Day Ago
- ABS(Open-Close) Percent 2 Days Ago
- ABS(Open-Close) Percent 3 Days Ago

Yesterdays Volume is Greater Than 1000000 Shares

COOLTRADER PRO

Watch List Tab

Once you have added a rule it will show up in the list below. Add as many rules as you would like to quickly filter stocks and identify opportunities.

DELETE SELECTED RULES

WatchList Count
13
Good!

Institutional Ownership Percent is Greater Than 20
200-Day Average Volume is Greater Than 1000000 Shares
3-Day SMA is Greater Than 10-Day SMA
5-Day SMA is Greater Than 18-Day SMA
20-Day SMA is Greater Than 50-Day SMA
Yesterdays Close Price is Greater Than 20 Dollars
Yesterdays Close Price is Less Than 25 Dollars

Current Watch List
Click Symbol for Chart

BPOP
CSCO
FLIR
ITT
LUK
NAV
NCR
NDAQ
NWL
OI
SNH
UNM
X

WatchList Count
13
Good!

Next

Now that you have identified the stocks you want to trade go ahead and click Next or select the next tab Open Position Rules

Navigation tabs: Add To Current Position Rules (4), Exit Trade Rules (5), Profit Requirements (6), Strategy Statistics (7), Auto Trader Preferences (1), Watch List Rules (2), Open New Position Rules (3)

COOLTRADER PRO

Open Positions Tab

Add To Current Position Rules (4)	Exit Trade Rules (5)	Profit Requirements (6)	Strategy Statistics (7)
Auto Trader Preferences (1)	Watch List Rules (2)	Open New Position Rules (3)	

Intra-day rules for selecting which stocks will be Bought / Long

(right-click indicator for description)

- Todays Current Price
- Todays Abs(PriceChange)
- Todays Abs(PriceChange%)
- Todays (Open+High)/2
- Todays (Open+Low)/2
- Todays Last Trade Price
- Todays Current Bid Price
- Todays Current Ask Price
- Todays Current Ask-Bid Spread
- Todays Current Ask-Bid Spread% of Bid Price
- Todays Trailing Highest Bid Price
- Todays Trailing Highest Ask Price
- Todays Trailing Lowest Bid Price
- Todays Trailing Lowest Ask Price
- Todays Volume

Value
Percent
Shares
Bars
Days

0

Less Than
Greater Than
Less Than or Equal
Greater Than or Equal
Equal

ADD RULE

- Todays Current Bid Price
- Todays Current Ask Price
- Todays Current Ask-Bid Spread
- Todays Current Ask-Bid Spread% of Bid Price
- Todays Trailing Highest Bid Price
- Todays Trailing Highest Ask Price
- Todays Trailing Lowest Bid Price
- Todays Trailing Lowest Ask Price
- Todays Volume
- Price 1-Minute Ago
- Price 2-Minutes Ago
- Price 3-Minutes Ago
- Price 4-Minutes Ago
- Price 5-Minutes Ago

Todays Current Price is Greater Than Price 5-Minutes Ago

ALL of these conditions must be true before the position will be opened.
 A position can be opened if ANY of these conditions is true.

Copy WatchList Rules

DELETE SELECTED RULES

- Todays DOW Move is Greater Than 20
- Todays Current Price is Greater Than Todays Open Price
- Todays Current Price is Greater Than Price 5-Minutes Ago**
- Todays Open Price is Greater Than Yesterdays Close Price

Next
Previous

(Hold Ctrl key down to select multiple items)

COOLTRADER PRO

Open Positions Tab

Now you can build your open position rules and all rules will need to be true for the Robotic Trader to open a new position.

Intra-day rules for selecting which stocks will be Bought / Long

(right-click indicator for description)

- Todays Current Price
- Todays Abs(PriceChange)
- Todays Abs(PriceChange%)
- Todays (Open+High)/2
- Todays (Open+Low)/2
- Todays Last Trade Price
- Todays Current Bid Price
- Todays Current Ask Price
- Todays Current Ask-Bid Spread
- Todays Current Ask-Bid Spread% of Bid Price
- Todays Trailing Highest Bid Price
- Todays Trailing Highest Ask Price
- Todays Trailing Lowest Bid Price
- Todays Trailing Lowest Ask Price
- Todays Volume

Value
Percent
Shares
Bars
Days

0

Less Than
Greater Than
Less Than or Equal
Greater Than or Equal
Equal

ADD RULE

(right-click indicator for description)

- Todays Current Bid Price
- Todays Current Ask Price
- Todays Current Ask-Bid Spread
- Todays Current Ask-Bid Spread% of Bid Price
- Todays Trailing Highest Bid Price
- Todays Trailing Highest Ask Price
- Todays Trailing Lowest Bid Price
- Todays Trailing Lowest Ask Price
- Todays Volume
- Price 1-Minute Ago
- Price 2-Minutes Ago
- Price 3-Minutes Ago
- Price 4-Minutes Ago
- Price 5-Minutes Ago

Add as many rules as you would like below.

Copy WatchList Rules

DELETE
SELECTED
RULES

- ALL of these conditions must be true before the position will be opened.
- A position can be opened if ANY of these conditions is true.

Todays DOW Move is Greater Than 20
Todays Current Price is Greater Than Todays Open Price
Todays Current Price is Greater Than Price 5-Minutes Ago
Todays Open Price is Greater Than Yesterdays Close Price

Click to
copy watch
you watch
list.

COOLTRADER PRO

Add to Position Rules

Once you complete your open position rules you can create add to position rules. Once you enter a position you have two options take profit or add to the position. You can add on percentage moves or fixed dollar amount. You can also use the advancing and declining preferences features that will be covered in this section.

Auto Trader Preferences (1)	Watch List Rules (2)	Open New Position Rules (3)	
Add To Current Position Rules (4)	Exit Trade Rules (5)	Profit Requirements (6)	Strategy Statistics (7)

Build the rules for determining when to add shares to the stocks you already own

(right-click indicator for description)

<ul style="list-style-type: none">ABS(My Same Symbol Lowest Trade Price Move)ABS(My Same Symbol Highest Trade Price Move)Value of My Same Symbol Lowest Trade Price %Value of My Same Symbol Highest Trade Price %Timed Price 1Timed Price 2Timed Price 3Timed Price 4Timed Price 5Timed Volume 1Timed Volume 2Timed Volume 3Timed Volume 4	<ul style="list-style-type: none"><input checked="" type="radio"/> Value<input type="radio"/> Percent<input type="radio"/> Shares<input type="radio"/> Bars<input type="radio"/> Days <p>0</p> <ul style="list-style-type: none">Less ThanGreater ThanLess Than or EqualGreater Than or EqualEqual <p>ADD RULE</p>	<p>(right-click indicator for description)</p> <ul style="list-style-type: none">Value of My Same Symbol Highest Trade Price %Timed Price 1Timed Price 2Timed Price 3Timed Price 4Timed Price 5Timed Volume 1Timed Volume 2Timed Volume 3 <p>Percent %</p> <p>10</p> <p>{ 10 }</p>
---	--	--

ABS(My Same Symbol Lowest Trade Price Move) is Greater Than Value of My Same Symbol Highest Trade Price % (10)

ALL of these conditions must be true before shares will be added to position.
 Shares can be added to position if ANY of these conditions is true.

ABS(My Same Symbol Lowest Trade Price Move) is Greater Than Value of My Same Symbol Highest Trade Price %

- Today's DOW Move is Greater Than 20
- Today's Current Price is Greater Than Today's Open Price
- Today's Current Price is Greater Than Price 5-Minutes Ago
- Today's Open Price is Greater Than Yesterday's Close Price

DELETE SELECTED RULES

Copy WatchList Rules

Copy Open New Rules

COOLTRADER PRO

Add to Position Rules

If you would like to add to your positions on your long strategy at a certain percentage drop you can use the following rule. Reverse for Short Strategy.

Build the rules for determining when to add shares to the stocks you already own

(right-click indicator for description)

- ABS(My Same Symbol Lowest Trade Price Move)
- ABS(My Same Symbol Highest Trade Price Move)
- Value of My Same Symbol Lowest Trade Price %
- Value of My Same Symbol Highest Trade Price %
- Timed Price 1
- Timed Price 2
- Timed Price 3
- Timed Price 4
- Timed Price 5
- Timed Volume 1
- Timed Volume 2
- Timed Volume 3
- Timed Volume 4

- Value
- Percent
- Shares
- Bars
- Days

- Less Than
- Greater Than**
- Less Than or Equal
- Greater Than or Equal
- Equal

ADD RULE

(right-click indicator for description)

- Value of My Same Symbol Highest Trade Price %
- Timed Price 1
- Timed Price 2
- Timed Price 3
- Timed Price 4
- Timed Price 5
- Timed Volume 1
- Timed Volume 2
- Timed Volume 3

Percent %

10

[10]

Set the % here

ABS(My Same Symbol Lowest Trade Price Move) is Greater Than Value of My Same Symbol Highest Trade Price % (10)

- ALL of these conditions must be true before shares will be added to position.
- Shares can be added to position if ANY of these conditions is true.

- ABS(My Same Symbol Lowest Trade Price Move) is Greater Than Value of My Same Symbol Highest Trade Price %
- Today's DOW Move is Greater Than 20
- Today's Current Price is Greater Than Today's Open Price
- Today's Current Price is Greater Than Price 5-Minutes Ago
- Today's Open Price is Greater Than Yesterday's Close Price

Copy WatchList Rules

Copy Open New Rules

You can copy previously created rules above.

Add to Position Rules

Save Return My Subscriptions Advancing Preferences Declining Preferences Timed Indicators Set Symbol Files Find Sector Help ? Video Help

Add Additional Shares To Profitable Position

Add To Position As Stock Goes Up

Profitable Position Preferences

- Do Not add additional shares to PROFITABLE positions
- Add additional shares to PROFITABLE positions
 - Also use these values for Profit Goals (instead of the Profit Goals set on the Profit Requirements tab)
 - Add additional shares if today's current bid price is
 - Greater Than the Highest Purchased Price (for a Long position) or Lower than the Lowest Price purchased (for a Short Position)
 - OR
- Use Predefined Table

Predefined Table

Buy / Sell After This Advance From Initial Position	Total Advance	If No Closes At Previous Price	Total Advance
1	0.25	1	0.25
2	0.25	2	0.75
3	0.25	3	1.25
4	0.25	4	1.75
5	0.25	5	2.25
6	0.25	6	2.75
7	0.25	7	3.25
8	0.25	8	3.75
9	0.25	9	4.25

Return

If you would like to add to winning positions and utilize a predefined table you can select the advancing preferences tab. Select Add additional shares to PROFITABLE positions and follow the instructions.

Add to Position Rules

Save Return My Subscriptions Advancing Preferences Declining Preferences Timed Indicators Set Symbol Files Find Sector Help ? Video Help

Add Additional Shares To Losing Position

Add To Position As Stock Goes Down

Losing Position Preferences

- Do Not add additional shares to LOSING positions
- Add additional shares to LOSING positions
 - Also use these values for Profit Goals (instead of the Profit Goals set on the Profit Requirements tab)
 - Add additional shares if today's current ask price is
 - Less Than the Lowest Purchased Price (for a Long position) or greater than the Highest Sell Price (for a Short position)
 - OR
- Use Predefined Table

Predefined Table

Buy / Sell After This Decline From Initial Position	Total Decline	If No Closes At Previous Price	Total Decline
1 0.25	0.25	1 0.25	0.25
2 0.25	0.50	2 0.50	0.75
3 0.25	0.75	3 0.50	1.25
4 0.25	1.00	4 0.50	1.75
5 0.25	1.25	5 0.50	2.25
6 0.25	1.50	6 0.50	2.75
7 0.25	1.75	7 0.50	3.25
8 0.25	2.00	8 0.50	3.75
9 0.25	2.25	9 0.50	4.25

Return

If you would like to add to Losing positions and utilize a predefined table you can select the Declining preferences tab. Select Add additional shares to LOSING positions and follow the instructions.

COOLTRADER PRO

Exit Position Rules

Once you have completed the add to positions section you can add Exit rules or skip to Tab 6 the Profit Goal Tab. This section is available but not necessary.

Auto Trader Preferences (1)	Watch List Rules (2)	Open New Position Rules (3)
Add To Current Position Rules (4)	Exit Trade Rules (5)	Profit Requirements (6)
		Strategy Statistics (7)

Rules for determining when to EXIT an active Long trade

(right-click indicator for description)

<ul style="list-style-type: none">Calendar Year HighCalendar Year LowCommon Shares OutstandingCurrent AssetsCurrent LiabilitiesCurrent Year EPSDays To Next EarningsDividend AmountDividend RateDividend Yield %52-Week High52-Week Low5-Year Growth Rate %Historical VolatilityInstitutional Ownership Percent	<input type="radio"/> Value <input type="radio"/> Percent <input type="radio"/> Shares <input type="radio"/> Bars <input type="radio"/> Days	<ul style="list-style-type: none">Current HourCurrent MinuteCurrent Day Of Week (1-7)Session Profit/Loss ValueSession Profit/Loss PercentSession P/L Trail Stop Loss PercentSession P/L Trail Stop Loss ValueTodays Total PLTodays Net PLMy Open Symbol Net PLMy All Symbols Lowest Trade MinutesMy All symbols Highest Trade MinutesMy All Symbols Lowest Trade DaysMy All Symbols Highest Trade DaysMy Same Symbol Lowest Trade Minutes
---	--	---

5

Less Than
Greater Than
Less Than or Equal
Greater Than or Equal
Equal

ADD RULE

Institutional Ownership Percent is Less Than 5

ALL of these conditions must be true before the position will be closed.
 A position can be closed if ANY of these conditions is true.

DELETE SELECTED RULES

Institutional Ownership Percent is Less Than 5

Profit Goal Requirements Tab

Welcome to the final and most important tab. In this section you will learn how to tell your Robotic Trader how much money you want to make. Below is the page!

Auto Trader Preferences (1)	Watch List Rules (2)	Open New Position Rules (3)
Add To Current Position Rules (4)	Exit Trade Rules (5)	Profit Requirements (6)
		Strategy Statistics (7)

Set Buy / Long Profit Goals

Profit Goal (per share)

Fixed amount

or

% of entry price

Minimum amount

Pullback After Reaching Profit Goal (per share)

Fixed amount

or

% of entry price

Minimum amount

Start Profit Protection Here (per share)

Fixed amount

or

% of entry price

Minimum amount

Stop Loss (per share)

Fixed amount

or

% of entry price

Minimum amount

Trailing Stop Loss (per share)

Fixed amount

or

% of entry price

Minimum amount

ReEntry Pullback (per share)

Fixed amount

or

% of entry price

Minimum amount

Profit Goals

Set the initial price move goal for which the trade could exit profitably.

Profit Goal Requirements Tab

Profit Goal (per share)

00.20000 Fixed amount
or
 4 % of entry price
00.00000 Minimum amount

The First box will allow you to set your profit goal. You can set it for a Fixed amount or click the second option to set goal based on a percentage profit. You can also set the percentage to capture a minimum profit.

Pullback After Reaching Profit Goal (per share)

00.03000 Fixed amount
or
 1 % of entry price
00.00000 Minimum amount

Once the Robotic Trader achieves the profit goal the system will look for a pullback to exit the position. The Trader will then ride the stock up until it pulls back the defined amount.

Start Profit Protection Here (per share)

00.00000 Fixed amount
or
 1 % of entry price
00.00000 Minimum amount

After the protection amount is achieved it will trigger a floating variable stop loss that will tighten as the stock advances. If the stock reverses the system will close the position and take the profit.

Profit Goal Requirements Tab

Stop Loss (per share)

50.00 Fixed amount
or
 1 % of entry price
00.10000 Minimum amount

This feature can be used to limit loss on a position. In a long or buy trade the Trader will close out the position if the price drops set amount below the entry price.

Trailing Stop Loss (per share)

50.00 Fixed amount
or
 1 % of entry price
00.10000 Minimum amount

This feature represents a loss limit from the highest price achieved in a trade. If the stock drops by set amount from the highest price achieved the Trader will exit the position.

ReEntry Pullback (per share)

00.00000 Fixed amount
or
 1 % of entry price
00.05000 Minimum amount

After a long or buy trade is exited a stock must drop by the set amount before the trader can reopen a position.

COOLTRADER PRO

Congratulations you have made it through the manual! If you have further questions please take advantage of the video or online training or contact technical support at 480-563-5620. You can also email technicalsupport@cooltraderpro.com.

